



*Where countryside charm meets award-winning gastro dining.*

## THE ANCHOR ASPLEY GUISE

### *Relaxed Luxury in Aspley Guise*

Nestled beside the historic 13th-century St Botolph's Church, The Anchor offers a sophisticated yet soulful backdrop for your wedding.

We specialise in warm hospitality, exceptional British food and a light-filled setting that brings the outdoors in.

### *Your Perfect Day Starts Here*

Contact our dedicated **wedding organiser** today to book a private tour and discuss your bespoke menu.

☎ 01908 991770

✉ [theanchor@copperbirchinns.co.uk](mailto:theanchor@copperbirchinns.co.uk)

🌐 [www.theanchoraspleyguise.co.uk](http://www.theanchoraspleyguise.co.uk)

📍 10 The Square, Aspley Guise, Milton Keynes, MK17 8DF



## *Our Signature Wedding Spaces*

*Whether you are planning an intimate candlelit dinner or a grand garden celebration, our spaces combine traditional village charm with professional elegance.*

### ***The Full Anchor Experience:***

Exclusive hire of the pub, gardens, and terrace for your sole use.

#### **CAPACITY**

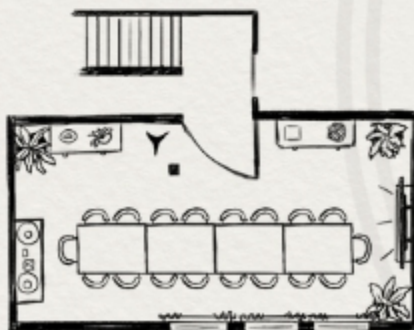
Up to 120 guests for seated dining or  
140 for a standing reception.

### ***The Captain's Quarters***

Intimate, refined dining on a dedicated private floor.

#### **CAPACITY**

Up to 18 guests for a seated wedding breakfast.



### ***The Main Restaurant & Conservatory***

A bright, botanical setting featuring bi-fold doors that open onto a private terrace.

#### **CAPACITY**

Up to 60 guests for your wedding breakfast.





## *The Gastro-Pub Feast*

*Our menus are a love letter to British produce, designed around how you want to celebrate.*

### *The Plated Menu*

From £48 pp

A refined 3-course experience featuring seasonal ingredients like 28-day aged beef and line-caught trout.

### *The Social Feast*

From £35 pp

"Family Style" dining with large sharing platters of slow-roasted meats and artisanal breads served to the centre of the table.

### *The Evening Provisions*

From £22 pp

Elevated comfort food, including gourmet wagyu sliders, truffled mac & cheese pots, or our signature wood-fired sourdough pizzas.

## *Curated Drinks Packages*

### *The Sip & Social*

£22 pp

Arrival Prosecco or local craft ale, half a bottle of house-selected wine, and a toast glass.

### *The Artisan Upgrade*

+£10 pp

Swap your arrival drink for a Signature Botanical Cocktail (e.g., Rhubarb & Garden Mint Fizz) and upgraded Reserve wines.

## *The "Anchor Essentials"*

(Included as Standard)

*We believe the "little things" shouldn't be "extras". Every booking includes:*



#### **Dedicated**

#### **Wedding Host:**

To guide you from "Yes" to "I Do".



#### **Styling Kit:**

Crisp linens, premium glassware, and rustic menu cards.



#### **Technical Facilities:**

High-speed Wi-Fi and microphones for those all-important speeches.



#### **The Finishing Touches:**

Professional cake stand, silver knife, and garden games on the terrace.